



Hitachi 12T ZX120 Zaxis

Available for  
hire.

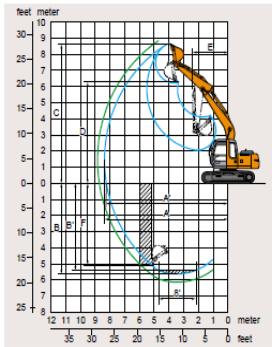
Short or Long-  
term use.

Mine Site or  
Civil Project.

Contact Jemrok  
today.



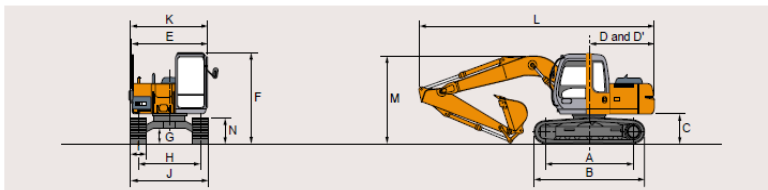
# Hitachi ZX120 Zaxis Capabilities



		ZAXIS120	
Arm length		8'3" (2.52 m) arm	9'11" (3.01 m) arm
A	Max. digging reach	27'2" (8 270)	28'8" (8 740)
A'	Max. digging reach (on ground)	26'8" (8 140)	28'3" (8 620)
B	Max. digging depth	18'3" (5 570)	19'11" (6 060)
B'	Max. digging depth (8' level)	17'7" (5 350)	19'3" (5 870)
C	Max. cutting height	28'11" (8 570)	29'2" (8 900)
D	Max. dumping height	20'3" (6 160)	21'4" (6 490)
E	Min. swing radius	7'8" (2 340)	8'6" (2 590)
F	Max. vertical wall	16'6" (5 070)	18'0" (5 500)
Bucket digging force	ISO	22,300 lbf (10,100 kgf)	
	SAE : PCSA	19,400 lbf (8,800 kgf)	
Arm crowd force	ISO	14,600 lbf (6,600 kgf)	13,000 lbf (5,900 kgf)
	SAE : PCSA	14,100 lbf (6,400 kgf)	12,800 lbf (5,800 kgf)

Excluding track shoe lug.

## LH517 dimensions



		ZAXIS120			ZAXIS120	
A	Distance between tumbler rollers	9'5" (2 890)			L	Overall length
B	Undercarriage length	11'9" (3 580)			With 8'3" (2.52 m) arm	25'0" (7 610)
C	Counterweight clearance	2'11" (890)			With 9'11" (3.01 m) arm	25'0" (7 620)
D	Rear-end swing radius	7'0" (2 130)			M	Overall height of boom
D'	Rear-end length	7'0" (2 130)			With 8'3" (2.52 m) arm	8'10" (2 680)
E	Overall width of upperstructure	8'1" (2 460)			With 9'11" (3.01 m) arm	**8'10" (2 680)
F	Overall height of cab	9'0" (2 740)			N	Track height
G	Min. ground clearance	1'5" (440)			With triple grouser shoes	2'7" (790)
H	Track gauge	6'6" (1 990)				
I	Track shoe width	G 20" (500)	G 24" (600)	G 28" (700)		
J	Undercarriage width	8'2" (2 490)	8'6" (2 590)	8'10" (2 690)		
K	Overall width	8'2" (2 500)	8'6" (2 590)	8'10" (2 690)		

\* Excludes track shoe lug

\*\*This dimension is shown in this transmission body position of the arm

†: Trivia min-use when

## Contact Us

David Cooper

Engineering Manager

ph: 03 6442 2699

m: 0437 100 299

e: david.cooper@jemrok.com.au

Scott St Clair

Operations Manager

ph: 03 6442 2699

m: 0439 321 738

e: scott@jemrok.com.au

